

# E.S. Fox Limited

## Industrial Construction



560 MW Cogeneration Plant

### COMPANY CONTACT

E.S. Fox Limited — Industrial Construction

[www.esfox.com](http://www.esfox.com)

905-354-3700 x1210

#### HEAD OFFICE

P.O. Box 1010  
9127 Montrose Road  
Niagara Falls, Ontario L2E 7J9  
TELEPHONE: 905-354-3700  
WEBSITE: [www.esfox.com](http://www.esfox.com)



PORT ROBINSON  
HAMILTON  
TORONTO  
THUNDER BAY  
SUDBURY  
KINGSTON  
KINCARDINE  
OSHAWA



**Founder - Edward (Ted) Fox**

# E.S. Fox Limited

## CORPORATE OVERVIEW

Since 1934, E.S. Fox Limited (ESFL) has set the standard for safety and quality in the fabrication and construction industry. ESFL, a privately owned, Canadian, multi-trade company, providing a single source for Industrial, Institutional, Commercial, and Power Generation projects. With over 3.0 million direct-hire man-hours last year, we self-perform Structural Steel Fabrication and Erection, Mechanical, Electrical, Sheet Metal, HVAC, Refrigeration, Millwright / Rigging, and Boiler Making.

The strength of our company stems from the vast experience of its people, the integration of a variety of skilled trades, and dedication to total control of construction through computerized planning and monitoring techniques.

ESFL has established a reputation for high quality workmanship, operational flexibility, efficiency, and timely project completion.

## CONSTRUCTION CAPABILITIES

As a fully integrated, multi-trade construction firm, E.S. Fox Limited provides clients with a single source solution for their detail engineering, fabrication, construction, and maintenance needs. We are a solutions based provider that delivers a superior level of service from “cradle-to-grave,” as we offer multi-trade, service oriented solutions for all your ICI and Power Generation projects.

## FABRICATION CAPABILITIES

E.S. Fox Limited is proud to operate three state-of-the-art fabrication facilities across Ontario. At our main fabrication facility in Port Robinson, we offer over 83,000 square feet of production space. We work to the highest standards to produce Pipe Spools, Modules, Cryogenic Cold Boxes, and Pressure Vessels. With over 800 weld procedures and 40 quality certifications including nuclear, E.S. Fox Limited continues to be a leader and a symbol of Canadian strength and tradition in the supply of Quality Fabrication Services for the Industrial, Commercial, Institutional, and Power Generation markets for over eight decades.

## SERVICES

- ENGINEERING
- FABRICATION
- STRUCTURAL DESIGN
- STRUCTURAL STEEL ERECTION
- BRIDGE ERECTION
- MILLWRIGHTING | RIGGING
- BOILERMAKING
- MECHANICAL
- ELECTRICAL
- SHEET METAL
- REFRIGERATION
- HVAC

### HEAD OFFICE

P.O. Box 1010  
9127 Montrose Road  
Niagara Falls, Ontario L2E 7J9  
TELEPHONE: 905-354-3700  
WEBSITE: [www.esfox.com](http://www.esfox.com)



PORT ROBINSON  
HAMILTON  
TORONTO  
THUNDER BAY  
SUDBURY  
KINGSTON  
KINCARDINE  
OSHAWA



# E.S. Fox Limited

## Environmental Health and Safety

### SAFETY CULTURE

At ESFL, employee safety, protection of the environment, and work quality are the main focus of our safety culture. Both management and employees work together in an effort to further advance knowledge of safety and incident prevention. Together we work to ensure a safe work environment for all. Our employees believe in the fundamental principle that safety is everyone's responsibility.

One of our core values is to "Prevent the Event." Incident prevention is the integral part of every job with the safety and well-being of each individual the number one priority.

### SAFETY PROGRAM KEY ELEMENTS

- Corporate Safety Manual
- Site Specific Safety Plans
- Orientation and Training
- Incident Investigation
- Lessons Learned Bulletins
- Job Safety Analysis
- Workplace Inspections
- Senior Management Review
- Safety First Attitude
- Trending and Analysis
- Setting Objectives and Targets
- Safety Workshops
- Mentoring Program
- J.H.S.C.
- Strong Communication
- Accountable Supervision
- Safety Meetings



International  
Organization for  
Standardization

ISO 45001:2018

#### HEAD OFFICE

P.O. Box 1010  
9127 Montrose Road  
Niagara Falls, Ontario L2E 7J9  
TELEPHONE: 905-354-3700  
WEBSITE: [www.esfox.com](http://www.esfox.com)



PORT ROBINSON  
HAMILTON  
TORONTO  
THUNDER BAY  
SUDBURY  
KINGSTON  
KINCARDINE  
OSHAWA

# E.S. Fox Limited

## Quality Assurance



ISO	CSA	ASME
<ul style="list-style-type: none"> <li>• ISO 9001:2015</li> <li>• ISO 14001</li> <li>• ISO 18001</li> </ul>	<ul style="list-style-type: none"> <li>• CSA N285.0 Nuclear Class 1,2,3, &amp; 4 Parts, Components &amp; Support (Shop &amp; Field)</li> <li>• CSA N285.0 Nuclear Material Supply Ferrous and Non-Ferrous (3 Locations)</li> <li>• CSA N286-12 Nuclear</li> <li>• CSA N299.1 – 2016</li> <li>• CSA B51 Boiler, Pressure Vessels &amp; Pressure Piping &amp; Repairs (Shop &amp; Field)</li> <li>• CSA B51 Category A, B, C, E &amp; H Type Welded Non-Welded Fittings (Shop &amp; Field)</li> <li>• CSA B51 Hot Tap &amp; Line Stopping (Shop &amp; Field)</li> <li>• CSA Z7396. 1-17 Medical Gas Pipeline Systems Part 1</li> </ul>	<ul style="list-style-type: none"> <li>• National Board Registration for ASME Section III, R, VIII (Shop &amp; Field)</li> <li>• ASME Section III, Division 1: N, NPT, NA, NS</li> <li>• ASME Section VIII, Division 1 &amp; 2 Pressure Vessels (Shop &amp; Field)</li> <li>• ASME U, U2, S, &amp; PP Stamps (Shop &amp; Field)</li> <li>• ASME U, UM Stamps: Edmonton Division (Shop &amp; Field)</li> <li>• ASME B31.1 Power Piping (Shop &amp; Field)</li> <li>• ASME B31.3 Process Piping (Shop &amp; Field)</li> <li>• ASME B31.5 Refrigeration Piping (Shop &amp; Field)</li> <li>• CSA B52 Mechanical Refrigeration Code</li> </ul>
CWB		
Structural Steel CWB W47.1 Div. 1  Structural Aluminum CWB W47.2 Div. 1		



**HEAD OFFICE**  
 P.O. Box 1010  
 9127 Montrose Road  
 Niagara Falls, Ontario L2E 7J9  
 TELEPHONE: 905-354-3700  
 WEBSITE: [www.esfox.com](http://www.esfox.com)



PORT ROBINSON  
 HAMILTON  
 TORONTO  
 THUNDER BAY  
 SUDBURY  
 KINGSTON  
 KINCARDINE  
 OSHAWA

# E.S. Fox Limited

## Locations & Facilities

**Head Office: Niagara Falls, ON —240,000 square feet**

Branch Location	Capabilities		Square Footage
Darlington, ON	Construction		
Hamilton, ON	Construction	Fabrication	3,000 sq. ft.
Kingston, ON	Construction	Fabrication	17,000 sq. ft.
Port Robinson, ON		Fabrication	83,000 sq. ft.
Sudbury, ON	Construction		
Thunder Bay, ON	Construction	Fabrication	5,000 sq. ft.
Tiverton (Kincardine), ON	Construction		
Vaughan (Toronto), ON	Construction		
Oshawa, ON	Construction		
		<b>Total Fabrication</b>	<b>108,000 sq. ft.</b>



### HEAD OFFICE

P.O. Box 1010  
 9127 Montrose Road  
 Niagara Falls, Ontario L2E 7J9  
 TELEPHONE: 905-354-3700  
 WEBSITE: [www.esfox.com](http://www.esfox.com)



PORT ROBINSON  
 HAMILTON  
 TORONTO  
 THUNDER BAY  
 SUDBURY  
 KINGSTON  
 KINCARDINE  
 OSHAWA



# E.S. Fox Limited

## Capabilities

### CONSTRUCTION CAPABILITIES

As a fully integrated, multi-trade construction firm, E.S. Fox Limited provides clients with a single source solution for their detail engineering, fabrication, construction, and maintenance needs. We are a solutions based provider that delivers a superior level of service from “cradle-to-grave,” as we offer multi-trade, service oriented solutions for all your ICI and power sector projects.

We provide the following construction services:

- ◆ Piping
- ◆ Electrical
- ◆ Structural Steel
- ◆ Ironworkers
- ◆ Millwrights
- ◆ Boiler Making
- ◆ Sheet Metal
- ◆ HVAC
- ◆ Instrumentation & Controls
- ◆ Operating Engineering
- ◆ Insulation
- ◆ Carpenters
- ◆ Labourers
- ◆ Refrigeration



#### HEAD OFFICE

P.O. Box 1010  
9127 Montrose Road  
Niagara Falls, Ontario L2E 7J9  
TELEPHONE: 905-354-3700  
WEBSITE: [www.esfox.com](http://www.esfox.com)



PORT ROBINSON  
HAMILTON  
TORONTO  
THUNDER BAY  
SUDBURY  
KINGSTON  
KINCARDINE  
OSHAWA

# E.S. Fox Limited

## Capabilities

### FABRICATION CAPABILITIES

At our main fabrication facility in Port Robinson, Ontario, we offer over 83,000 square feet of production space. We work to the highest standards required to produce Cryogenic Cold Boxes, Pipe Spools, Modules, and Pressure Vessels. With more than 800 weld procedures, we fabricate:

#### Modules and Vessels

- ◆ Process Modules and Equipment Skids
- ◆ Cryogenic Air Distillation Columns for:  
Oxygen, Nitrogen, and Argon
- ◆ Air Liquefaction / Separation
- ◆ Hydrogen Purification
- ◆ Catalyst Reclamation
- ◆ Oil/Water Purification

#### Pipe Fabrication

- ◆ Stand alone contracts & support of field projects and other fabrication projects
- ◆ Area of expertise is high alloy materials:  
Stainless Steel, Aluminum, Titanium, Chrome-Moly
- ◆ Carbon Steel up to 84" Diameter
- ◆ Victaulic—Roll Grooved Piping up to 48" Dia.
- ◆ Jacketed Pipe



Pressure Vessel



Cryogenic Cold Box

#### HEAD OFFICE

P.O. Box 1010  
9127 Montrose Road  
Niagara Falls, Ontario L2E 7J9  
TELEPHONE: 905-354-3700  
WEBSITE: [www.esfox.com](http://www.esfox.com)



PORT ROBINSON  
HAMILTON  
TORONTO  
THUNDER BAY  
SUDBURY  
KINGSTON  
KINCARDINE  
OSHAWA

# E.S. Fox Limited

## Capabilities

### PORT ROBINSON SHIPPING

We are unique in that we have access to the Welland Canal at our Port Robinson facility. This includes our own loading docks, where we can ship oversized modules from up to 800 tons to any water accessible location in the world.

#### Transportation Access & Dock Facilities

- ◆ 1/2 mile from Highway 406 extension providing direct access to Queen Elizabeth Highway
- ◆ 1/4 mile from Canadian National Railroad line
- ◆ Heavy Barge Roll On/Roll Off Loading Dock extending into the Welland Ship Canal turning basin providing 10' draught and 400 ton capacity
- ◆ Heavy Lift Dock of 800 ton capacity, dock face 475 ft. draught 25 ft. The dock can accommodate maximum Seaway length vessels
- ◆ The site incorporates 5 acres of level, well compacted, crushed stone assembly area



Cryogenic Cold Box - Port Robinson Loading Dock

#### HEAD OFFICE

P.O. Box 1010  
9127 Montrose Road  
Niagara Falls, Ontario L2E 7J9  
TELEPHONE: 905-354-3700  
WEBSITE: [www.esfox.com](http://www.esfox.com)



PORT ROBINSON  
HAMILTON  
TORONTO  
THUNDER BAY  
SUDBURY  
KINGSTON  
KINCARDINE  
OSHAWA



# E.S. Fox Limited — Industrial Project Profile



## **Molson Coors—New Bottle Washing Line**

### **Client**

Molson Coors Brewing Company

### **Scope**

- Replace 600 Ton Bottle Washer
- Selective electrical and mechanical demo
- Remove portion of the walls and roof
- Take apart and remove bottle washer (20' x 20' x 200' long)
- Structural enhancements to the floor
- New civil works, process piping, electrical and controls
- Install new washer
- Replace walls and roof

### **Trades**

Structural Steel | Mechanical | Electrical | Millwrights

### **HEAD OFFICE**

P.O. Box 1010  
9127 Montrose Road  
Niagara Falls, Ontario L2E 7J9  
TELEPHONE: 905-354-3700  
WEBSITE: [www.esfox.com](http://www.esfox.com)



PORT ROBINSON  
HAMILTON  
TORONTO  
THUNDER BAY  
SUDBURY  
KINGSTON  
KINCARDINE  
OSHAWA

# E.S. Fox Limited — Industrial Project Profile



## **St. Lawrence Cement Slag Mill**

<b>Client</b>	CRH formerly St. Lawrence Cement
<b>Scope</b>	<ul style="list-style-type: none"><li>• Civil   Structural   Architectural   Mechanical</li><li>• Foundations, structural, equipment required to transfer Granulated Furnace Slag (GBFS) from pad to bin and grinding process</li></ul>
<b>Trades</b>	Ironworkers   Sheet Metal Workers

### HEAD OFFICE

P.O. Box 1010  
9127 Montrose Road  
Niagara Falls, Ontario L2E 7J9  
TELEPHONE: 905-354-3700  
WEBSITE: [www.esfox.com](http://www.esfox.com)



PORT ROBINSON  
HAMILTON  
TORONTO  
THUNDER BAY  
SUDBURY  
KINGSTON  
KINCARDINE  
OSHAWA



# E.S. Fox Limited — Industrial Project Profile



## GM Canada—New Chiller Plant

<b>Client</b>	GM Canada
<b>Scope</b>	<p>We self-performed the mechanical, ironwork, electrical, and Sheet Metal installation. The work included:</p> <ul style="list-style-type: none"><li>• Erection of a new chiller building</li><li>• Installation of two new chillers complete with controls</li><li>• Installation of all Victaulic/welded piping systems</li><li>• Installation of all electrical services including high voltage gear and motor</li><li>• Control Centers (MCC's)</li></ul>
<b>Trades</b>	Pipefitters   Millwrights   Ironworkers   Electricians   Sheet Metal   Building Cladding   Roofing

### HEAD OFFICE

P.O. Box 1010  
9127 Montrose Road  
Niagara Falls, Ontario L2E 7J9  
TELEPHONE: 905-354-3700  
WEBSITE: [www.esfox.com](http://www.esfox.com)



PORT ROBINSON  
HAMILTON  
TORONTO  
THUNDER BAY  
SUDBURY  
KINGSTON  
KINCARDINE  
OSHAWA

# E.S. Fox Limited — Industrial Project Profile



## Cytec Niagara Falls—Phosphine Plant Expansion

### Client

Cytec Niagara Falls

### Scope

E.S. Fox Limited was a Prime Contractor for the plant expansion at Cytec's facility in Niagara Falls, which produces Phosphine and Phosphine derivative products for industrial, mining, and agricultural products. ESFL was awarded several contracts including:

- Utility Racks
- Thermal Oxidizer & Flare Building—Mechanical & Electrical Process Systems Installation
- Phosphine / Compression—Mechanical & Electrical

### Trades

Pipefitters, Millwrights, Ironworkers, Electricians, Sheet Metal

### HEAD OFFICE

P.O. Box 1010  
9127 Montrose Road  
Niagara Falls, Ontario L2E 7J9  
TELEPHONE: 905-354-3700  
WEBSITE: [www.esfox.com](http://www.esfox.com)



PORT ROBINSON  
HAMILTON  
TORONTO  
THUNDER BAY  
SUDBURY  
KINGSTON  
KINCARDINE  
OSHAWA



# E.S. Fox Limited — Industrial Project Profile



## *John Deere Welland Works—New Paint Facility*

### Client

John Deere

### Scope

The project consisted of a number of new and retrofitted design-build structures, complete with all process and conveying equipment.

The principle new structure on the project was an 80,000 sq. ft. paint facility, tied into the existing plant by a 120 ft. long enclosed overhead conveyor bridge. The new bridge enabled supply of raw product to the new paint facility, and delivered painted product back to the newly retrofitted 10,000 sq. ft. staging area.

### Trades

Electricians | Pipefitters | Millwrights | Sheet Metal | Instrumentation

### HEAD OFFICE

P.O. Box 1010  
9127 Montrose Road  
Niagara Falls, Ontario L2E 7J9  
TELEPHONE: 905-354-3700  
WEBSITE: [www.esfox.com](http://www.esfox.com)



PORT ROBINSON  
HAMILTON  
TORONTO  
THUNDER BAY  
SUDBURY  
KINGSTON  
KINCARDINE  
OSHAWA

# E.S. Fox Limited — Industrial Project Profile



## St. Lawrence Seaway Tie Up Wall—Lock 1, 2, and 3

<b>Client</b>	St. Lawrence Seaway
<b>Scope</b>	<ul style="list-style-type: none"><li>Supply and installation of Structural Steel for the new Tie Up Walls at Lock 1, Lock 2, and two locations at Lock 3. Also including a tie back system for sheet piling</li></ul>
<b>Trades</b>	Ironworkers

### HEAD OFFICE

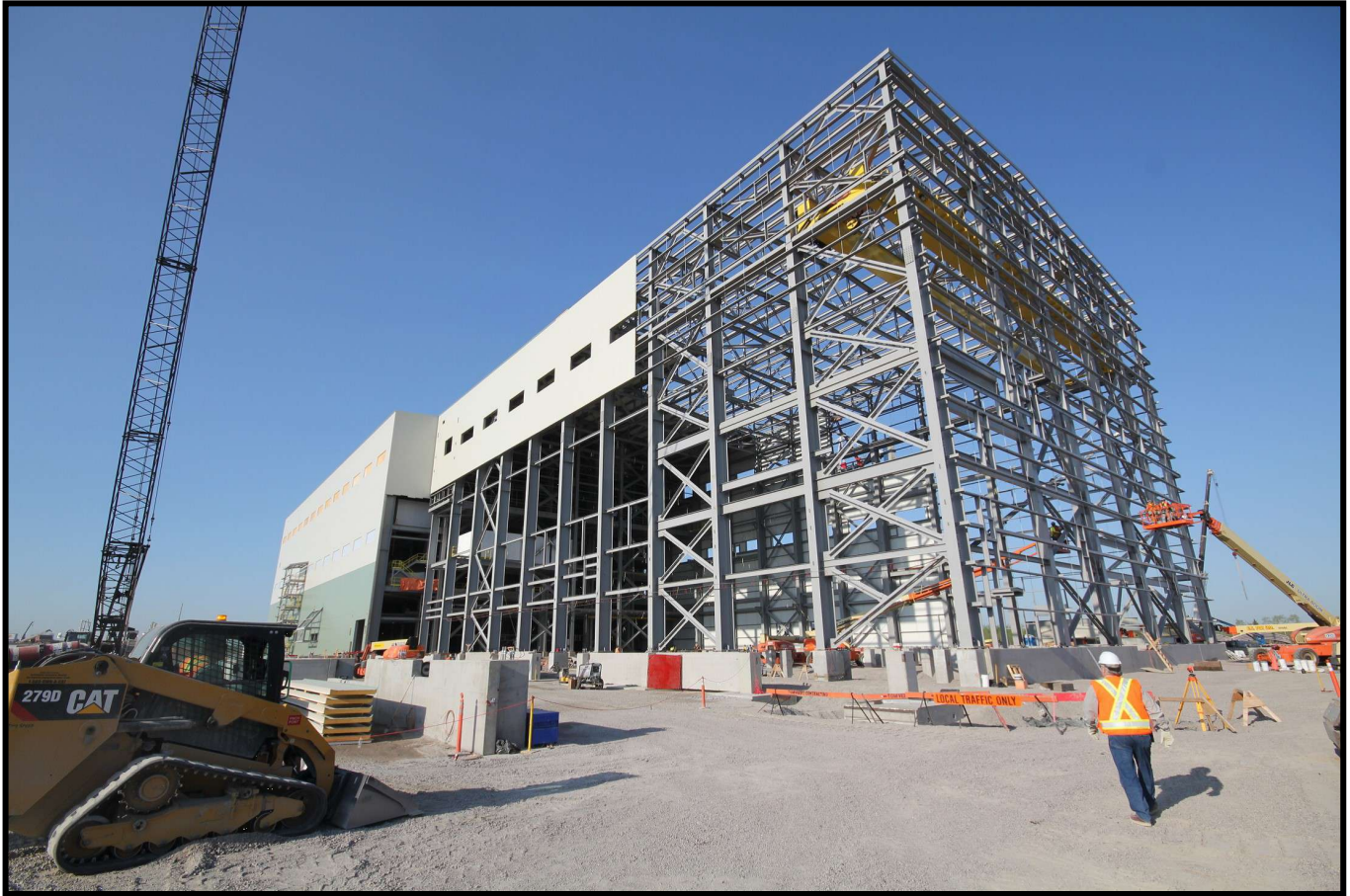
P.O. Box 1010  
9127 Montrose Road  
Niagara Falls, Ontario L2E 7J9  
TELEPHONE: 905-354-3700  
WEBSITE: [www.esfox.com](http://www.esfox.com)



PORT ROBINSON  
HAMILTON  
TORONTO  
THUNDER BAY  
SUDBURY  
KINGSTON  
KINCARDINE  
OSHAWA



# E.S. Fox Limited — Industrial Project Profile



## **Rainy River Gold Mine MPEI Grinding Building—Structural**

<b>Client</b>	New Gold Inc.
<b>Scope</b>	<ul style="list-style-type: none"><li>• Supply &amp; Installation of Structural Steel and miscellaneous metals</li><li>• Cladding, Roofing, Metal Deck, Grouting, Windows, Man Doors, Overhead Doors</li><li>• 6,000 Tons of structure total</li><li>• Erection of (15) modules consisting of pre-fabricated structural steel frames c/w equipment, mechanical, and electrical services</li></ul>
<b>Trades</b>	Ironworkers   Sheet Metal

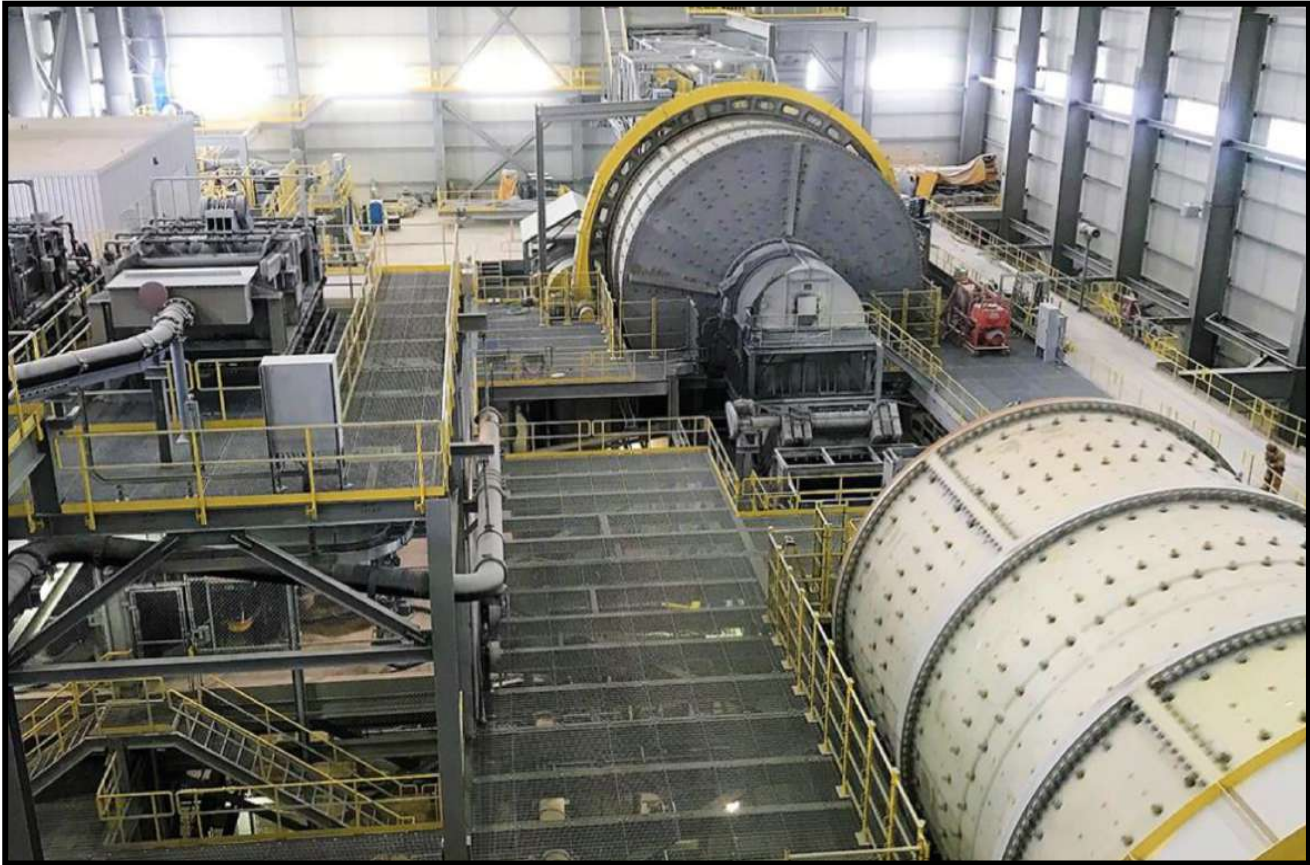
### HEAD OFFICE

P.O. Box 1010  
9127 Montrose Road  
Niagara Falls, Ontario L2E 7J9  
TELEPHONE: 905-354-3700  
WEBSITE: [www.esfox.com](http://www.esfox.com)



PORT ROBINSON  
HAMILTON  
TORONTO  
THUNDER BAY  
SUDBURY  
KINGSTON  
KINCARDINE  
OSHAWA

# E.S. Fox Limited — Industrial Project Profile



## **Rainy River Gold Mine MPEI Grinding Building—Interior**

### **Client**

New Gold Inc.

### **Scope**

- MPEI Contract 015—Crusher Building
- Supply and installation of all piping, electrical, and HVAC systems
- Installation of all major owner supplied equipment associated with:
  - ◆ SAG Mill
  - ◆ Ball Mill
  - ◆ Pebble Crusher
  - ◆ Pre-leach Thickener
  - ◆ Concentrator
  - ◆ Cyclopack
  - ◆ Screens
  - ◆ Conveyor Systems
  - ◆ Transformers and MCC's
  - ◆ Modular Electrical Rooms
  - ◆ Intensive Cyanidization Unit
  - ◆ Process Pumps
  - ◆ Wet Scrubber Cyclone

### **HEAD OFFICE**

P.O. Box 1010  
9127 Montrose Road  
Niagara Falls, Ontario L2E 7J9  
TELEPHONE: 905-354-3700  
WEBSITE: [www.esfox.com](http://www.esfox.com)



PORT ROBINSON  
HAMILTON  
TORONTO  
THUNDER BAY  
SUDBURY  
KINGSTON  
KINCARDINE  
OSHAWA



# E.S. Fox Limited — Industrial Project Profile



## 640 MW Cogeneration Plant

### Client

TransCanada Pipelines

### Scope

- Supplied and erected 1500 Tons of structural steel
- Field installed two Alstom HRSG's
- Associated piping and electrical work for ten process modules
- Assembled modules at our main yard and dock facility in Port Robinson
- Shipped job to site for final assembly by ESFL

### Trades

Ironworkers | Sheet Metal

### HEAD OFFICE

P.O. Box 1010  
9127 Montrose Road  
Niagara Falls, Ontario L2E 7J9  
TELEPHONE: 905-354-3700  
WEBSITE: [www.esfox.com](http://www.esfox.com)



PORT ROBINSON  
HAMILTON  
TORONTO  
THUNDER BAY  
SUDBURY  
KINGSTON  
KINCARDINE  
OSHAWA